



Transfer DICOM 3.0  
CT image to PIGA  
Planning Station



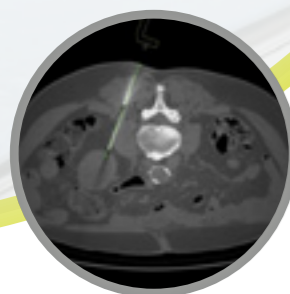
Plan and confirm  
for device  
positioning



Prepare  
patient for  
procedure



Insert needle  
through the guide



Review needle  
position with plan

## PIGA CT WORKFLOW

5 Simple Steps



### Europe

Authorized Representative  
Emergo Europe, Molenstraat 15,  
2513 BH The Hague, The Netherlands  
Tel: (31) (0) 70 345-8570 | Fax: (31) (0) 70 346-7299

### South East Asia

### Middle East Asia

### United States

Biomedical Imaging Solutions, Inc.  
P.O. Box 913, North Andover, MA 01845

### India

3<sup>rd</sup> Floor, # 16, Southwest Boag Road,  
T.Nagar, Chennai – 600 017, India.  
Ph.: +91.44.24341246/24345911/45506412  
info@perfinttech.com | [www.perfinttech.com](http://www.perfinttech.com)



© Copyright 2010 Perfint Healthcare Private Limited. All rights reserved. (Ver 5.0)



**PIGA** **CT**

Robotic Assistance for Soft Tissue Interventions



Robotic Assistance for Soft Tissue Interventions

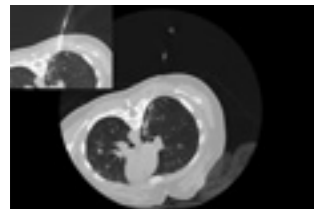
**CLINICAL BENEFITS**

- Safer, Simpler Procedures
- Accurate execution of complex angular plans
- Fewer repeat passes : Quicker recovery, Lower radiation, Lesser patient discomfort
- Clinical productivity - faster procedures, inexpensive disposables

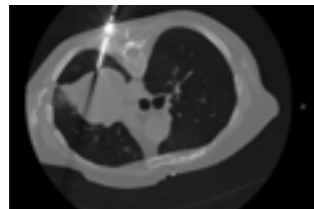


**PRODUCT FEATURES**

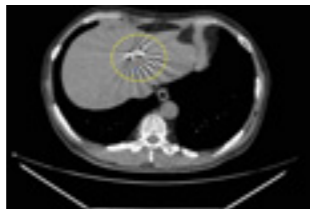
- 3D (Orbital, Cranio - Caudal Angulation) - Reach difficult to access lesion
- No fluoroscopy required - Clinician and Patient safety
- Move in and Dock – No set up time for procedure
- Simple User Interface – Aligned to proven workflow



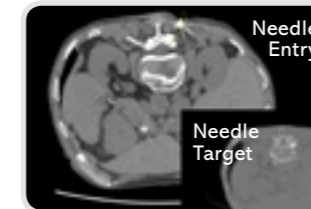
Biopsy -7mm nodule in the medial segment of right middle lobe



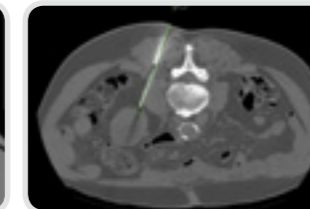
RFA – 14G Electrode



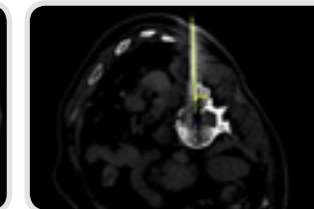
Fiducial marker placement in the liver



Vertebral Bone Biopsy, Transpedicular approach avoiding the spinal cord and nerve endings



Renal Biopsy, Posterior oblique approach



Patient positioned laterally, lesion 108mm deep